




INVERLOCH
ACCOMMODATION

*"May your adventures bring you closer together, even
as they take you far away from home."*

Welcome
To Your Holiday Home
Hosted by Inverloch Accommodation



"The beach is not always a place; sometimes it's a feeling." – Unknown

Welcome to your holiday home and thank you for choosing to stay with Inverloch Accommodation!

We're thrilled to have you as our guest and we want your stay to be exceptional. Bass Coast offers a wide range of experiences for you to enjoy. Explore the beautiful beaches, try thrilling water sports, or simply relax and take in the breathtaking coastal scenery.

Our team is here to assist you throughout your stay. Whether you need recommendations on local attractions, assistance with anything in your holiday home, or have any questions, we're just a phone call away.

Thank you again for choosing Inverloch Accommodation. We hope you have a fantastic time and make wonderful memories during your stay. Enjoy your holiday home and the beauty of this coastal paradise!

House Rules

We want you to enjoy your stay at our holiday home. There are just a few simple house rules that we ask you to adhere to.

- Please remove your shoes
- No smoking or vaping inside the property
- Please take note of the correct bins to use for all waste, place bins at curb before collection days, and remove excess rubbish when you depart
- No parties or events
- Enjoy fun and laughter, but please keep noise to a minimum in the evenings
- Unless arranged with Inverloch Accommodation, no pets allowed
- Park in designated spaces only
- Caravans, tents and swags are not permitted on site at any property whether in use or not
- Ensure the house is locked when you leave
- Ensure all lights and appliances are turned off when you depart
- Accidents can happen, but please report these to our office
- Ensure top and bottom sheets are used on all beds, please contact our office for linen hire if you require
- All bookings regardless of source are subject to the terms and conditions published on Inverloch Accommodations website



Immerse Yourself

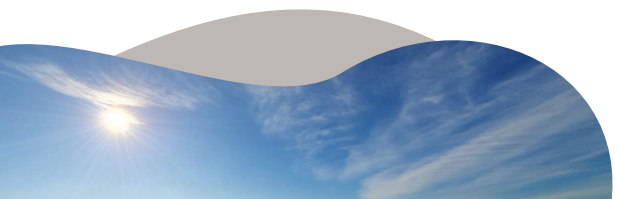
Make the most out of your stay by immersing yourself in the area. Explore our stores, eat in our cafes, strike up conversations with locals. Approach your stay with an open mind and sense of curiosity.

Be Responsible

As responsible guests, take care of the small details that make a difference. Keep a tidy home, put out the bins, ensure that all the lights and appliances are off and lock all doors when you leave. By doing so, you not only conserve energy but also ensure the safety of the house.

Reach Out

If you encounter any issues during your stay, don't hesitate to reach out for help. Whether it is a minor inconvenience or something more significant, we value your proactive communication.



Let the adventures begin

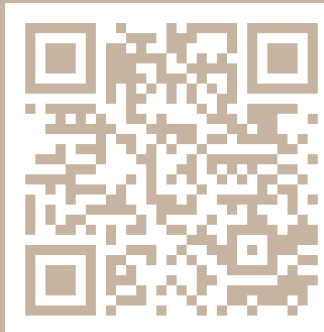
Give Feedback

If any concerns arise, we appreciate your direct communication with the property management team. This allows for a more personalised resolution and contributes to the ongoing improvement of our service and properties.

Share your Positive Experiences

Leave a lasting impression by sharing your positive experiences. Leave reviews and praise the aspects that you loved most about your stay. You are not only expressing your gratitude, but inspiring others to experience an extraordinary holiday in this beautiful part of the world.

Book your next stay with our team



Remember, your care and respect for this cherished home reflects the person you are. So make your stay truly extraordinary by embracing these guidelines and leaving a positive imprint on the place you call your temporary home



TROUBLESHOOTING

We understand that staying at an unfamiliar property can come with some adjustment. If you have any urgent concerns outside of our office hours please only TEXT our after hours number so that we can respond appropriately. Our office is open daily until 5pm (3-4pm on Sunday).

After Hours Urgent Assistance

Text 0403 583 646

Office Hours Contact 03 5613 9053



Internet

We understand that internet is considered a necessity in life these days. Our team do not have expertise in wifi and internet. Please check that the property actually has wifi included in the listing on our website, check that the modem has lights on and that they are not flashing. If modem lights are flashing, try turning the modem off, then on again. Check for the password on the information given to you at check in, on the fridge or on the modem itself. If you are still unable to connect, please call our office in business hours.



Hot Water

Many of our properties have a limited supply of hot water. If you do not have hot water please locate the fuse box. This may be inside the property, in the hallway or garage, or outside in the meter box. Check that the Hot water switch is ON/UP.

If there is a Hot Water Boost button press and hold for 2-5 seconds to fast track the heating process. If there is no boost button, it will reheat overnight.

Loss of Power

If you have no power to the property, check if the neighbours have also lost power. If not, locate the meter box or fuse box and check that the power switches are all ON/UP.

Gas

If the barbeque gas bottle runs out of gas, we ask that you take the bottle to the service station to be exchanged (take note to exchange with a bottle with the same colour tap). Provide us with the receipt and your bank details. We will ensure you are reimbursed for the cost of exchanging the gas bottle.

BBQ Safety: Please ensure that you move the bbq away from flammable objects and from under eaves before use. Ensure it is supervised at all times. Do not use on total fire ban days. If using to roast meat, use a tray to capture juices. Clean the bbq before and after use. Use barbeques outdoors only.



Keys

If you have lost your keys or locked yourself out of the property afterhours, please text our afterhours number. A call out fee may apply.

*You have a world of
possibilities waiting
for you*



SEE & EXPLORE

EXPERIENCE
OUR REGION
WITH SOME
LOCAL
KNOWLEDGE
AND OUR
FAVOURITES

Inverloch Accommodation



SHOPPING

Local tourism is enormously important to our region. Our local businesses always appreciate you taking time to shop in their stores. Sign up for their mailing list, ask about their online store, engage with their social media and help spread the word about their wares.

Our region has a range of clothing shops, galleries, gift stores and book shops where you can browse for unique items or a memento of your holiday. It has been said that the newsagency in Inverloch is the best in the universe*. The region offers a relaxed coastal vibe that makes shopping an enjoyable experience.



Explore these Local Gems

- Paperplay Inverloch
- Salt and Sand Clothing
- Framed Inverloch
- Bliss Clothing
- Mookah
- Sunni Rae
- Dot and Lu
- That Eco Place
- Nurture
- Serious Surf Stuff
- Greener Life
- Harmony and Home
- Zeal and Flow
- Inverloch Quality Meats
- Chapmans Butchery
- Treat Time

ESSENTIALS

There are supermarkets located in Inverloch, Wonthaggi and Tarwin Lower where you are able to purchase everyday essentials.

There are also convenience stores in Venus Bay, Cape Paterson and the east end of Inverloch



Farmers Markets



**BROWSE & BUY.
TASTE & SAVOUR.
MEET & LINGER.**

With fertile hills and lush fields woven into a tapestry of rich brown and vibrant green, it's easy to see why the Gippsland region is known for raising and growing some of the best produce in the country.

- **1st Saturday of the Month**
Koonwarra Farmers Market
8:30am - 12:30pm
Memorial Park, Koala Drive
Koonwarra
- **2nd Saturday of the Month**
Coal Creek Farmers Market
8:00am - 12:30pm
Car Park at Coal Creek
Korumburra
- **3rd Saturday of the Month**
Inverloch Farmers Market
8:00am - 1:00pm
The Glade, The Esplanade
Inverloch
- **Last Sunday of the Month**
Inverloch Community Farmers Market
9:00am - 1:00pm
The Glade, The Esplanade
Inverloch

Farm Gates

- Goshen Country - Cape Paterson
- Stones Throw Olives - Meeniyan
- Wattle Bank Farm - Wattlebank
- Bass Straight Direct Seafood - Newhaven
- Prom Country Cheese - Moyarra
- Trulli Pantry - Meeniyan (not a farm gate)
- Blue Tree Honey Farm - Meeniyan
- Flock Stock and Basil - Tarwin Lower
- Bassine Cheese - Bass
- Macca's Farm - Glen Forbes

HEALTH & WELLNESS

A great start to any holiday is to indulge in some pampering and relaxation. Inverloch is home to some exceptional experiences.

Try Beach Yoga, Pilates, a massage or a facial. Leave your holiday with a new hairstyle or colour.



PAMPER ME

- Soleil Skin and Beauty
- Nurture Inverloch
- Ocean Beauty
- Mind Body Day Spa
- Salt Water House
- The Break Massage Inverloch
- Fisk Beauty
- Jeminy Hair and Health
- Illuka Hair Studio
- Broadbeach Inverloch Health Club
- SSS Physio and Pilates
- The Yoga Stylist (Beach Yoga)
- Revive - Wonthaggi





An art love-story begins here

Street Art can be found in many of the laneways and on side walls of businesses throughout our region, the Inverloch skate park and hub features art from talented young locals. You will find art on the walls of the surf shop and the Local, and find mosaic art depicting scenes from our region near the hub.

A short drive from Inverloch, you can follow your own art trail to Fish Creek to see the famous Alison Lester Gallery, Wallace and Wallace Sculpture and Photography Gallery and Bianca Stefani Hilltop Gallery then head to Meeniyan to take in the Meeniyan Art Gallery and The Outer Space, then head back towards Leongatha through Koonwarra, being sure to check if Bob Hickman has a workshop running. At Leongatha, you can view the Art and Craft Gallery and Colleen Herbert's Corrugated Iron art, be sure to look out for murals by the talented Melanie Caple on the walls of her local cafe.

Look out for the Open Studio and Art Trail which allows you to visit studios that are usually closed to the public by following Art Connect South Gippsland.

Galleries

The Bass Coast Region has some easily found galleries. Many of our artists work from home and have their art on display at various spaces around our region. It is well worth searching these out and exploring beyond the studio spaces.

Some of our Favourite Galleries, Art Spaces and Artists:

- Framed Inverloch
- Maryanne Plenkovic
- Trilby Parise Artist
- Fiona Kennedy Art Studio & Gallery
- Annette Spinks Art Studio and Gallery
- Blue Salt Jewellers





Surf Club with a view

Inverloch Surf Lifesaving Club offers the Deck Bar, where you can bring your own share plate or cheese platter, purchase drinks at bar prices, and enjoy time with friends while watching over the main surf beach. <https://islsc.org.au/the-deck-bar/> for more information.

The Cape Paterson Life Saving Club is open for members and members' guests on Thursdays (Membership is inexpensive). Enjoy a drink while overlooking Cape Paterson Beach.

Unexpected Good Things

SHELL MUSEUM

The Inverloch Shell Museum contains one of the world's best displays of shells, with over 6,000 specimens on display including many local varieties. Entry is \$2 per person (children under 5 are free).

GUIDE PARK WONTHAGGI

A nod to the Mining Heritage of Wonthaggi, it features a mine themed slide tower, flying foxes, trampoline, carousel and nature-based play. There is also a water play area with water taps that lead through to different channels.

CAPE PATERSON ROCK POOL

One of Victoria's most famous saltwater gems, the man-made structure was originally built in the 1960s and is just as popular today! Families make a beeline to the inviting rocks on hot days.

SOLDIER CRABS AT SCREW CREEK

Take in the sights of Anderson Inlet from the Screw Creek walk, then walk back along the beach at low tide and delight in the march of thousands of tiny soldier crabs.

Day Trips to Enjoy

- A trip to Loch, a welcoming village with a rather famous Gin Distillery
- Bike ride along the Great Southern Rail Trail which stretches from Nyora to Welshpool
- A visit to Meeniyan for food, jewellery and galleries
- Dinosaur Dreaming - Guided tours to the dig site run over holiday periods
- South Gippsland drink trail
- Agnes Falls - an hour from Inverloch. a short 200m walk from the car park. Pack a picnic to enjoy under the shady blue gums
- A Day trip to Wilsons Promontory. Affectionately known as 'The Prom', it is one of the state's best loved parks





Bass Coast Rail Trail

Enjoy panoramic views of Bass Strait as you meander through farmland, coastal bushland, historic coal mining reserves and rugged coastline. The Bass Coast Rail Trail also links to the George Bass Coastal Walk at Kilcunda, making it possible to walk from the centre of Wonthaggi all the way to the Punch Bowl in San Remo.

George Bass Coastal Walk

The popular George Bass Coastal Walk is a cliff-top trail that stretches from the outskirts of San Remo at Punchbowl Road, to the Bass Highway (just opposite the hall at Peppermint Road) in Kilcunda.

Coastal Walks

Inverloch Foreshore Path

The shared pathway has stunning views of Andersons Inlet and Point Smythe. When you need an afternoon pick-me-up, stop in at one of the nearby cafes or shops. The kids will love that the paved pathway that runs through Rainbow Park playground and picnic/ BBQ area.

Screw Creek Estuary Walk

The Screw Creek Townsend Bluff Estuary Walk splits after the bridge at Screw Creek, with the left track continuing on to fishing platforms, and the right track winding up to the Bluff. Enjoy an undulating walk over the boardwalks, saltmarsh and mangroves of Screw Creek, and be rewarded with scenic views over Anderson Inlet from the Townsend Bluff lookout.

Point Smythe Walk

The Point Smythe Nature Trail is 6km in length and remains sheltered even on windy days. Taking approximately 2 hours to complete (return journey) the Point Smythe Walk takes you through masses of coastal vegetation and onto the beach at Point Smythe.



Tarwin River Boardwalk

Lovely scenic boardwalk along the beautiful Tarwin River, popular with locals and tourists alike. You will always see people fishing along the boardwalk.

*Smell the salt and
feel the sky. Let your
soul and spirit fly.*


Van Morrison



WHERE TO FIND YOUR COFFEE FIX

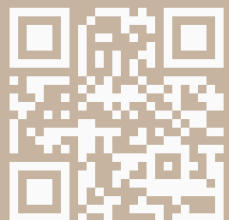
- **Bluette on Bear** Inverloch
 - **Coffee Love Van** Inverloch
 - **Gather Devour** Inverloch
 - **Gelato Al Mare** Inverloch
 - **Teepees Cafe & Bar** Inverloch
 - **The Beach Box** Inverloch
 - **The Corner Store** Inverloch
 - **The Local** Inverloch
 - **Inverloch Surf Lifesaving Club**
(Seasonal)
 - **Folks Coffee** Wonthaggi
 - **Hicksborough Store** Wonthaggi
 - **North Store** Wonthaggi
 - **South Drop** Wonthaggi
 - **The Coffee Collective** Wonthaggi
 - **Zeal and Flow** Cape Paterson
 - **The Bird & The Wolf** Tarwin Lower
 - **The Bay Gourmet** Venus Bay
-

We Must Have
Coffee

A silhouette of a person walking on a beach at sunset, carrying a surfboard. A dog is running in the water nearby. The sun is low on the horizon, creating a warm, golden glow over the ocean and beach. The person is walking towards the right, and the dog is running towards the left. The water is calm, and the beach is wet, reflecting the light from the sun.



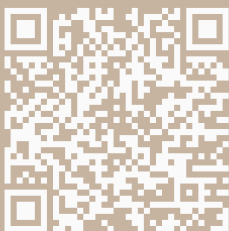
Foodies and those looking to enjoy local wines, ciders, and spirits can find out more from <https://www.visitgippsland.com.au/eat-and-drink> download a copy of the **EAT. DRINK. GIPPSLAND GUIDE** from the website



visitinverloch.co has a comprehensive list of all food and drink destinations in Inverloch along with their contact details



visitcapepaterson.com.au/food-and-drink/ has a comprehensive list of all food and drink destinations in Cape Paterson along with their contact details



visitbasscoast.com.au/experiences/eat-drink/cafes-bars-restaurants is a good resource to help you to find the best food and drinks our area has to offer

Eat. Drink. Enjoy.

Restaurants

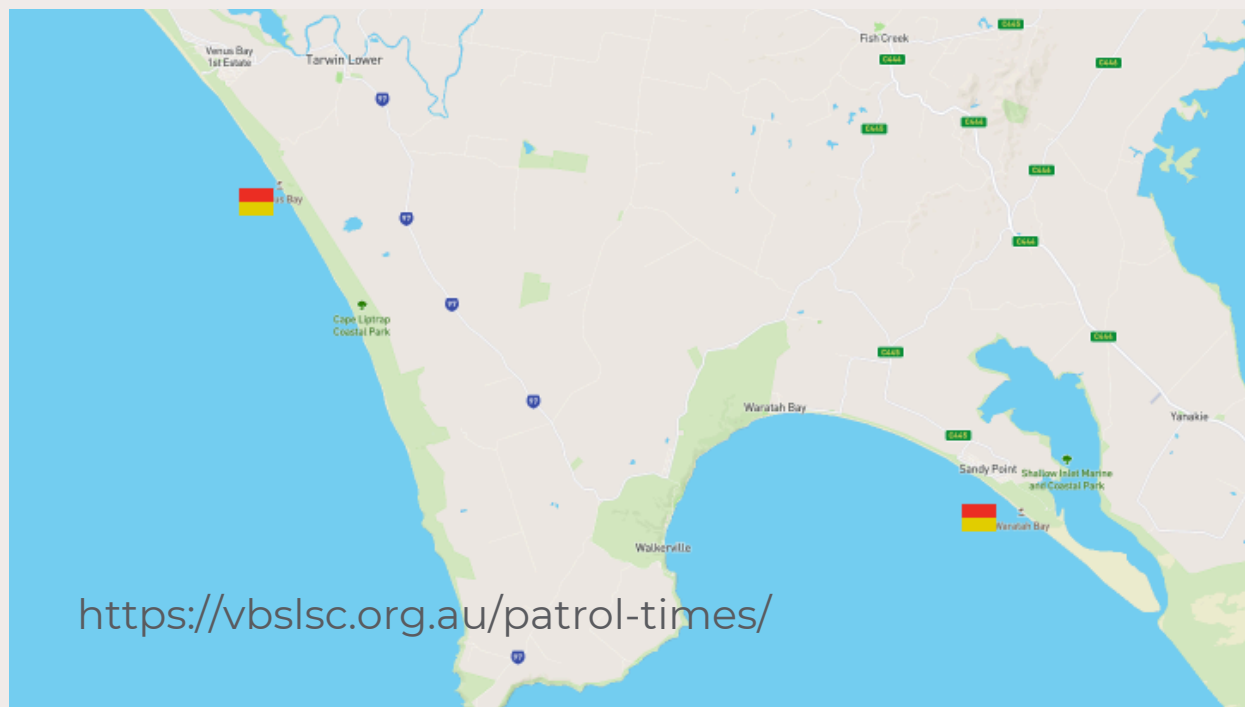
- **The Invy Espy.** Inverloch
- **The Inlet Hotel.** Inverloch
- **Tomo's Japanese.** Inverloch
- **The Chutney Bar.** Inverloch
- **Radius at RACV Resort.** Inverloch
- **Inverloch Palace.** Inverloch
- **Teepees Cafe & Bar.** Inverloch
- **The Sand Bar.** Inverloch
- **MK Thai.** Inverloch
- **The Sand Bar.** Inverloch
- **Cape Tavern.** Cape Paterson
- **Harmans Winery.** Wattle Bank
- **Riverview Hotel.** Tarwin Lower
- **The Cavity.** Venus Bay



SWIMMING

Venus Bay

Venus Bay is a holiday settlement nestled in amongst the vegetated sand dunes, which back an exposed and high energy beach. Be very careful if bathing here and stay in the patrolled section. A potentially hazardous beach usually with high waves and strong rips, so stay on the inner bar and in the patrol area between the flags. There is an average of 23 rescues each year, indicating the level of hazard. General Hazard Rating: 7/10 (Highly hazardous)



This is a rip. Where the water looks calmest, it may be most dangerous

- If caught in a rip, don't panic
- Seek help. Raise your arm and call out, to indicate you need assistance.
- Float with the current and don't fight the rip.
- Don't try to swim against the rip.



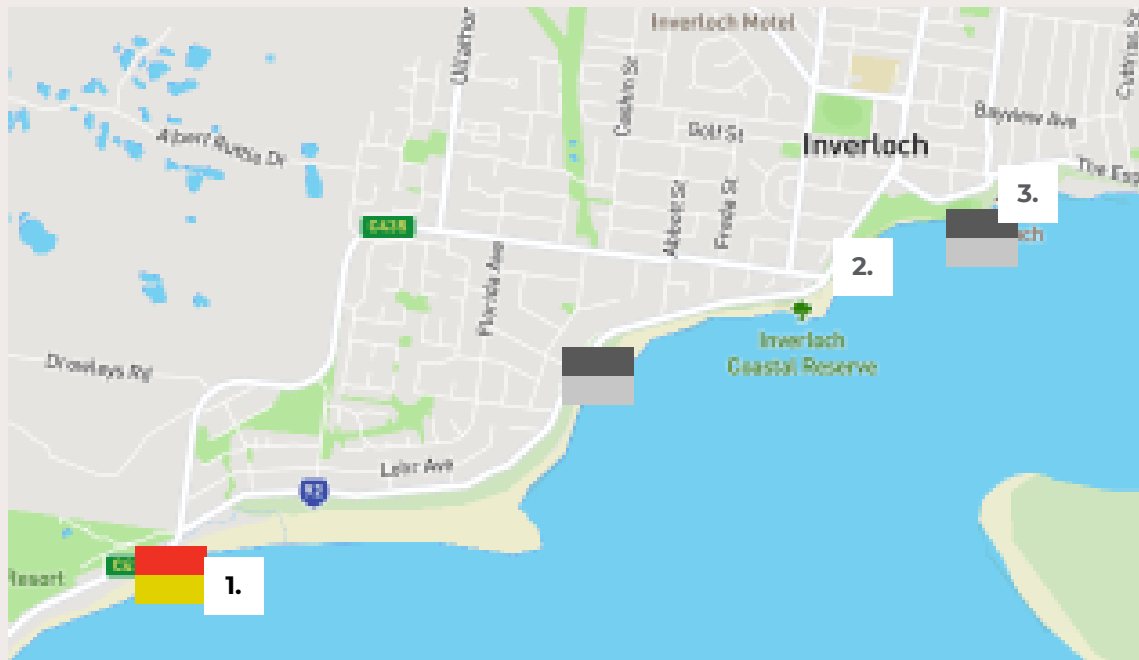
SWIMMING

Inverloch

Anderson Inlet is a spectacular sight when the sun is shining and the inlet is being enjoyed for all water sports; sailing, windsurfing, water skiing and swimming. There are three main areas for swimming as noted in the map. There are a few areas that are not recommended for swimming due to very strong tidal currents as well as rips. Please don't let this put you off enjoying our beautiful beaches, there are a few great spots we can recommend for you to enjoy during your holiday.



The calm waters of Anderson Inlet make this beach perfect for families with young children. This beach is not patrolled, however it is ideal for swimming, paddleboarding, and fishing. We recommend parking near the corner store cafe.



Please be aware that some beaches are better suited for experienced swimmers due to the presence of rips and strong currents

1. Inverloch Main Surf Beach

Patrolled in Summer and peak seasons <https://isls.org.au/patrols/>

The Main Surf Beach is located at the Surf Life Saving Club and is the only patrolled beach in Inverloch (during peak seasons only) It is subject to rips. General Hazard Rating: 4/10 (Moderately hazardous). Very experienced surfers tend to surf closer to town near Ozone street, this area is not recommended for inexperienced surfers.

2. The Glade area

The safe beaches website has listed an area called Hughes Point, that area of beach has changed enormously in recent years and although this beach is listed as a swimming spot on LSV websites, the area has a very strong tidal current and we suggest going closer toward the Glade for swimming. This area is still subject to strong tidal currents and a steep drop-off, so is best for experienced swimmers.

3. Broadbeach

The area west of the jetty is where dogs are allowed off leash at all times. At the end of the path to the beach from the end of Cuttriss Street is the divide where dogs are allowed to the right but not allowed to the left of the beach access path. To the left of this area is a good beach for families. There can still be a tidal current (parallel to the beach) at this beach depending on the tide coming in or going out. The area has a large shallow area at high tide.

SWIMMING

Cape Paterson



The Bass Coast is known for golden beaches and dramatic coastline, and Cape Paterson is no exception. This small seaside town is a favourite for beach goers, surfers and divers, and a fishing hot spot.



wlsc.org.au

capepatersonslsc.org/patrols.html

PATROLLED BEACHES

1.

A moderately safe beach fronted by a wide shallow bar. However, stay clear of the rocks and reefs at each end; watch for rips, especially toward the eastern rocks; and beware of the shorebreak at low tide. Best to bathe on the bar and between the flags, as 9 people are rescued on average each year.

2.

Known for family friendly swimming, the famous rock pool and surrounding rock formations. Cape Paterson Bay Beach is a 400 metres curved beach located adjacent to the centre of the Cape Paterson. This popular beach is ideal for families, anglers and divers alike, and includes a man-made rock pool on the nearby rock platform.



Local Attractions

01 | ENVIRONMENT

- Eagles Nest
- Bunurong Marine Park
- The Caves
- Shell Museum
- Wilson's Promontory
- Penguin Parade

02 | LEARNING

- Coal Creek
- Wonthaggi Coal Mine
- Dinosaur Dig
- Beach Exploration

03 | FUN

- Rainbow Park
- Skate Parks
- Off-Shore Surf School
- Salty Seas Surf Lessons
- Inverloch SUP
- Fishing
- Bike Riding
- Water Activities
- Cape Paterson eco Village Playground
- BMX track at Thompson Reserve

Local Sporting

Inverloch is home to the Sea Eagles Football & Netball Club, wearing the colours of West Coast Eagles. They won 5 premierships in 2023.

The tennis courts on Pier Road are available for hire from the newsagency, you will need your own equipment.

There are several great golf courses near Inverloch including Leongatha South Golf Course, If Course and Devils Dams Par 3 course.

Along Inverloch's foreshore path, there are several outdoor gym stations to utilise.

Inverloch Stingrays Cricket Club play at the Thompson Reserve oval on Cuttriss Street.

Parkrun is held every Saturday along the foreshore path in Inverloch, meeting at the Rotary Park "Stump".

There are many groups of swimmers, SUP paddlers and bike riders around Inverloch that welcome visitors.





INVERLOCH ACCOMMODATION



www.inverlochaccommodation.com.au